

Anti-CLDN4 hlgG1 Antibody(4B8)

Product information

GM-51517AB-10	10 µg
GM-51517AB-100	100 µg
GM-51517AB-1000	1 mg

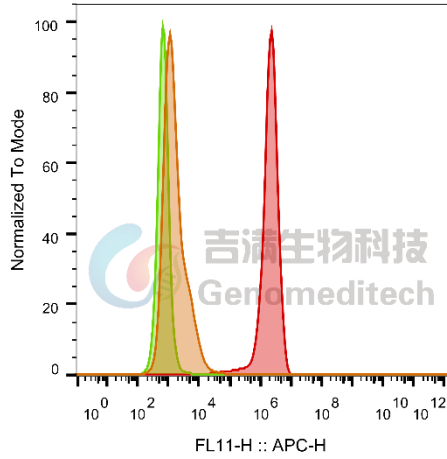
Antibody Information

Species Reactivity	Human;
Clone	4B8
Source/Isotype	Monoclonal human IgG1, κ
Application	Flow cytometry
Specificity	Detects CLDN4
Gene	CLDN4
Other Names	CPE-R, CPER, CPETR, CPETR1, WBSCR8, hCPE-R
Gene ID	1364 (human)
Background	Claudin-4(Claudin-4) is a kind of cell linker which belongs to CLAUDIN protein family. It forms tight junctions between cells, maintains the barrier function between cells, and regulates the infiltration of substances between cells
Storage	Store at 2-8°C short term (1-2 weeks).Store at ≤ -20°C long term. Avoid repeated freeze-thaw.
Formulation	Phosphate-buffered solution, pH 7.2.
Endotoxin	< 1 EU/mg, determined by LAL gel clotting assay

Data Examples

Flow cytometry

H_CLDN4 HEK-293 Cell Line (Catalog # GM- C26302) was stained with Anti-CLDN4 hIgG1 Antibody(4B8) (Catalog # GM-51517AB) or isotype control antibody, followed by anti-Human IgG APC-conjugated Secondary Antibody.



SampleID	Geometric Mean : FL11-H
HEK-293 anti-CLDN4+APC-2nd Ab	1662
HEK-293 H_CLDN4 H_IgG+APC-2nd Ab	708
HEK-293 H_CLDN4 anti-CLDN4+APC-2nd Ab	1.98E6

Fig. FACS